

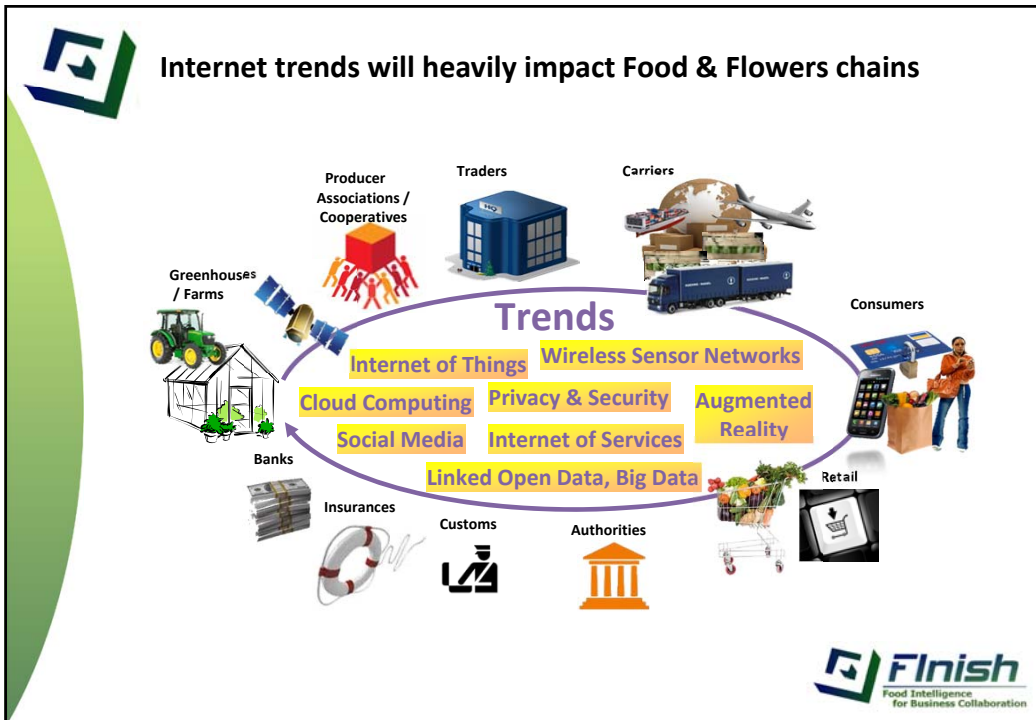
FInish

**Food Intelligence
for Business Collaboration**

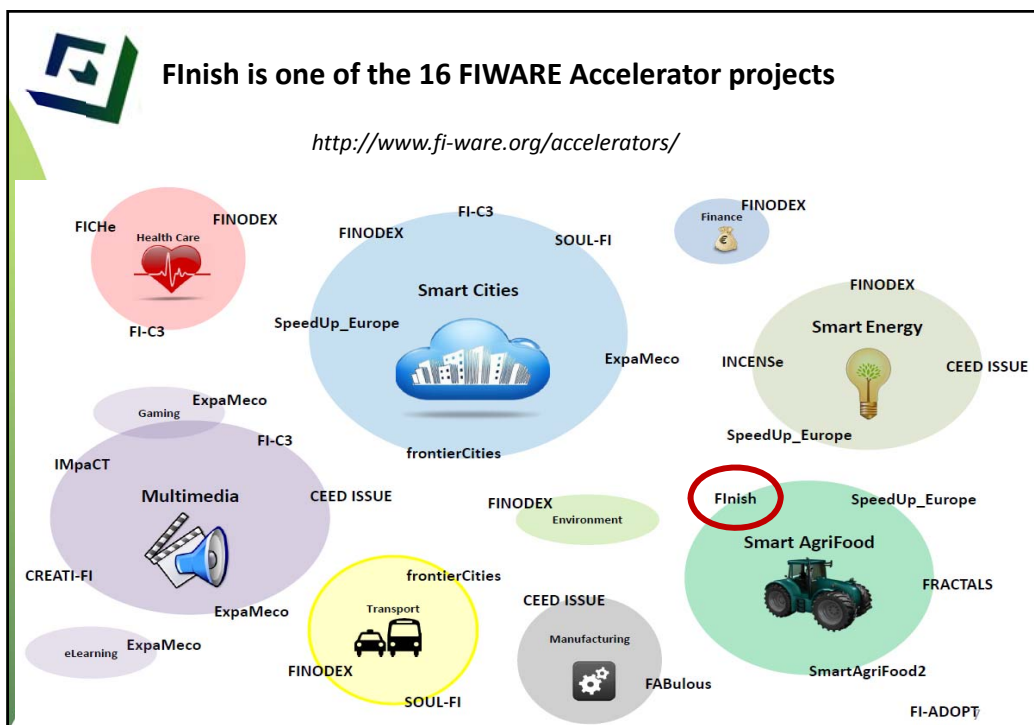
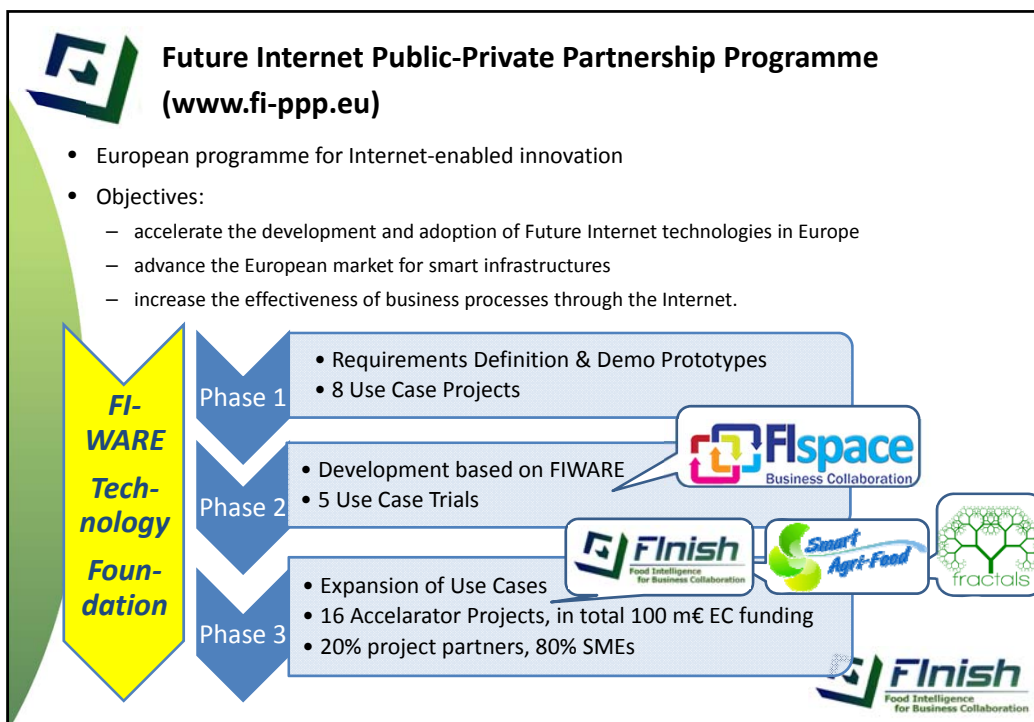
Introduction FInish

*Matchmaking Event Smart Apps for Food & Flowers
7 October 2014, Monster, NL*

Cor Verdouw – Wageningen UR



Disclaimer: no rights can be derived from the information provided in this presentation.



Disclaimer: no rights can be derived from the information provided in this presentation.



Objectives Flnish




1. **Empower small and innovative ICT players** to develop high-quality and high-impact solutions for food and flower supply chain networks based on technologies of the FI-PPP programme
2. **Develop a large set of innovative and technologically challenging services and applications** for virtualisation, connectivity and intelligence of food and flower supply chain networks
3. Implement and validate the technologies and concepts developed in the **Future Internet PPP programme**
4. **Support SMEs** in creating high-impact apps with Future Internet applications and helping to market their apps cross-border in specialised EU markets and beyond
5. **Ensure business value** of services/applications for collaborative business networks in food and flower industry

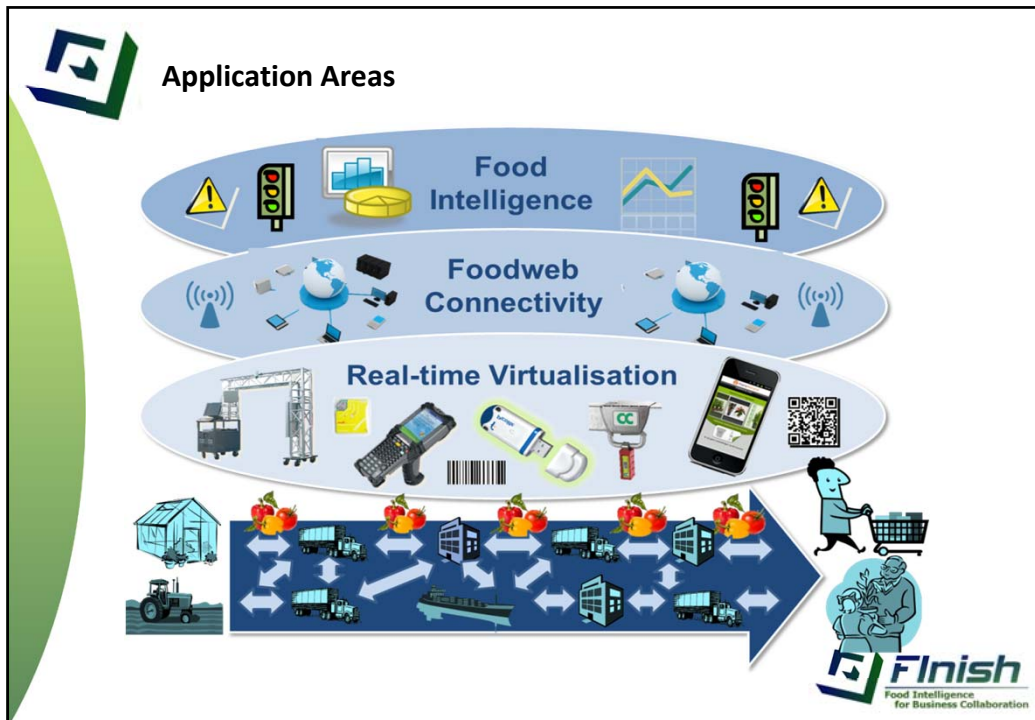




Flnish project

- EC Funding: € 6,1 Million
 - € 4,88 Million (80%) to be distributed to App Developers
- 8 partners from 6 countries
- 19 supporting organisations with background either in ICT and/or end-user related business, including:



We do not predefine Apps!!

We are asking for great ideas

With business need/interest

In the Food & Flower Chains domain


Flinish
Food Intelligence
for Business Collaboration



Good ideas for App development?

- Forecasting of supplies
- Simulation of shelf-life
- Delivery Control
- Quality assurance
- Rebate system
- Stakeholder involvement
- Feedback handling
- ...
- Risk management
- Managing supply chain
- Resource allocation
- Immediate delay notification
- 2nd source management
- Making use of sensors
- B2B & B2C trading
- ...

Now its your time to propose an idea!



Food Intelligence
for Business Collaboration




Flnish Accelerator – Available Grants

- 2 Calls for Application Development
 - Calls open in Oct-Dec 2014 and Mar-Apr 2015 – Searching for ± 50 apps
 - Envisaged apps are funded with some 50-150 kEURO
 - Only WEs / SMEs can submit proposals
 - Commitment and support of a business partner mandatory!
- Competitions
 - Two competitions - apps will be assessed by a jury
 - Prizes of up to 25 kEURO awarded in Oct. 2015 and Feb. 2016
- Hackathons
 - Educational hackathons foreseen. Further details on possible prizes will be published at a later point of time.
- Awards
 - The three most promising apps will also receive an award



Food Intelligence
for Business Collaboration



Preliminary * answers of some Frequently Asked Questions (1)

Who can apply?

- SMEs established in the EU and associated countries (< 250 employees, annual turnover ≤ 50 Mio EUR, and annual balance sheet total ≤ 43 Mio EUR)

How can I apply?

- Submit a proposal until the call deadline via a web tool.



How many organisations can participate in an app development?

- We are generally expecting that one SME is asking for a sub-grant. However, this SME could cooperate with other companies in app development. These companies should be described in the proposal and must also be SMEs.
- Furthermore, the a business partner must be involved that would represent e.g. the business end-user. The business partner needs not to be an SME.

How should Business Partners be involved?

- The business partner should actively participate in the app development, e.g. in requirements definition, functional design , prototype evaluation, testing, implementation and dissemination. This participation should be reflected in co-financing the proposal with ≥20% (in cash and/or in kind).
- To assure commitment, the business partner would need to sign a letter of intent of its willingness to contribute.

** The final information, including a detailed Guide for Applications, will become available at the opening of the call (www.finish-project.eu).*



Preliminary * answers of some Frequently Asked Questions (2)

Who owns the Intellectual Property of the software that my organisation develops?

- Your organization. All results that are developed by the envisaged sub-grantee will remain its own property and can be used without any limitation for commercialisation after the finalisation of the proposed development.

How should the proposal look like?

- A proposal template is currently under development and will be included in the guideline for applications (will be available when the call opens). It should be a condensed document (much shorter than EC proposals for e.g. FP7). However, it should contain enough details to enable a good evaluation since there will be no room for additional (oral) explanation.


How will my proposal be evaluated?


- External evaluators will assess the proposals based on predefined evaluation criteria. Based on the evaluation results, proposals will be ranked and funded as long as funding is available and the quality of the proposals is above the defined thresholds.

When would my participation start, if selected and administrative process completed?

- Evaluation, negotiation and contract closure is expected to take some 8-12 weeks. This means that selected proposals of the 1st open call could start in Spring 2015.


** The final information, including a detailed Guide for Applications, will become available at the opening of the call (www.finish-project.eu).*



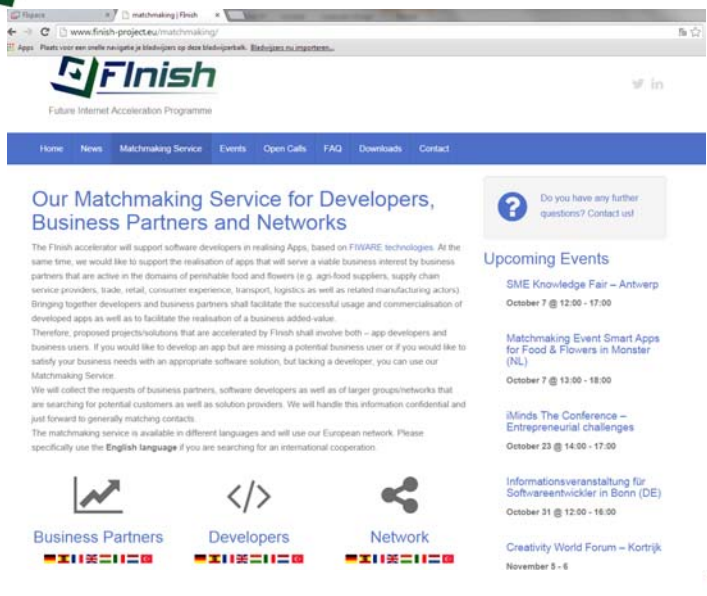


Evaluation criteria

Criteria	
Business potential	
1.1	Anticipated market demand
1.2	Competitive advantage
1.3	Scalability and growth potential
1.4	Quality of user relationship and testing
1.5	Business acumen of the team and business model
Technological excellence	
2.1	Innovativeness of solution
2.2	Creativity and quality of usage of FI-WARE technologies (NB preferably via FIspace)
2.3	Quality of the project plan and budget
2.4	Technical excellence of the team
Acceleration	
3.1	Anticipated impact of FI-PPP funding on growth
3.2	Synergies and fit with FI-PPP programme
TOTAL	

www.finish-project.eu/matchmaking




The screenshot shows the website interface for the FInish Matchmaking Service. It includes a navigation menu with links for Home, News, Matchmaking Service, Events, Open Calls, FAQ, Downloads, and Contact. The main content area features a section titled "Our Matchmaking Service for Developers, Business Partners and Networks" with a detailed description of the service. To the right, there is a "Do you have any further questions? Contact us!" button and a list of "Upcoming Events" including "SME Knowledge Fair – Antwerp", "Matchmaking Event Smart Apps for Food & Flowers in Monster (NL)", "iMinds The Conference – Entrepreneurial challenges", "Informationsveranstaltung für Softwareentwickler in Bonn (DE)", and "Creativity World Forum – Kortrijk". At the bottom, there are icons and labels for "Business Partners", "Developers", and "Network", each accompanied by a row of European flag icons. The FInish logo is present in the bottom right corner.



How to contact us?


<http://www.finish-project.eu> finish-info@finish-project.eu

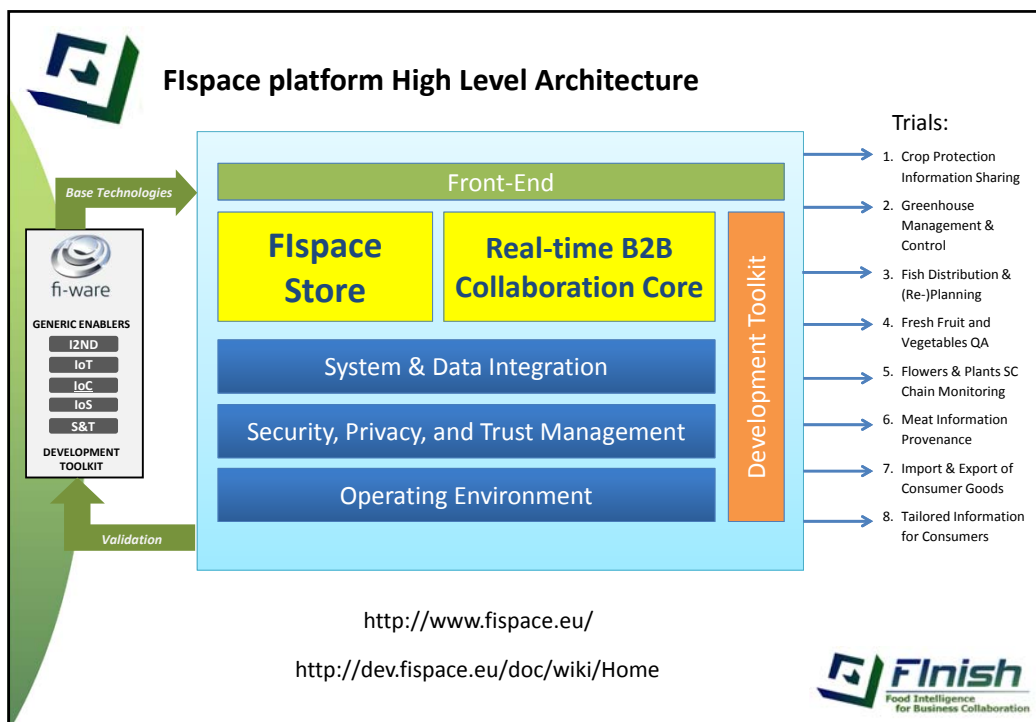


Flnish

**Food Intelligence
for Business Collaboration**

The next slides are for background
information





FIWARE Catalogue <http://catalogue.fi-ware.org/>

Generic Enablers

Home / Generic Enablers

Browse by Chapter

- Any -
- Any -
- Advanced Middleware and Web User Interfaces
- Applications/Services Ecosystems and Delivery Framework
- Cloud Hosting
- Data/Context Management
- Interface to Networks and Devices
- Internet of Things Services Enablement
- Security

ADVANCED MIDDLEWARE AND WEB USER INTERFACES

3DUI - WebTundra

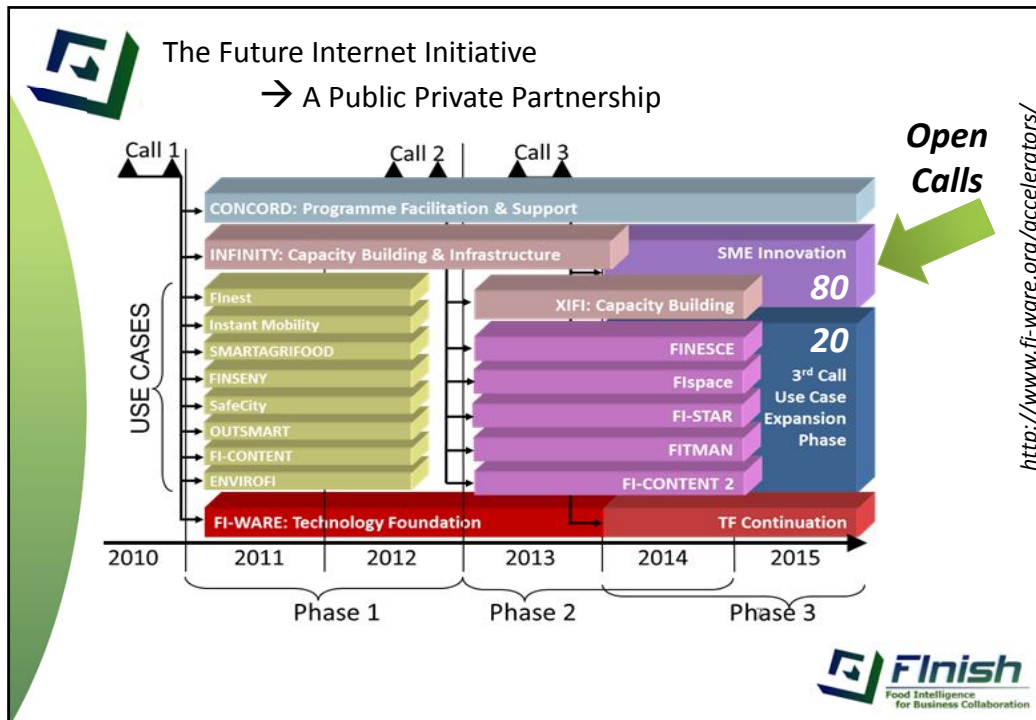
realXtend's Web client for realtime collaborative 3d applications
ADVANCED MIDDLEWARE AND WEB USER INTERFACES

GIS Data Provider - Geoserver/3D

Geographical Information System Provider
ADVANCED MIDDLEWARE AND WEB USER INTERFACES

FInish
Food Intelligence for Business Collaboration

Disclaimer: no rights can be derived from the information provided in this presentation.



Disclaimer: no rights can be derived from the information provided in this presentation.